

SOUTH

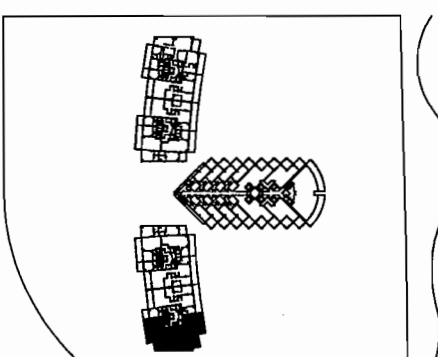
TOWER

RESIDENCES

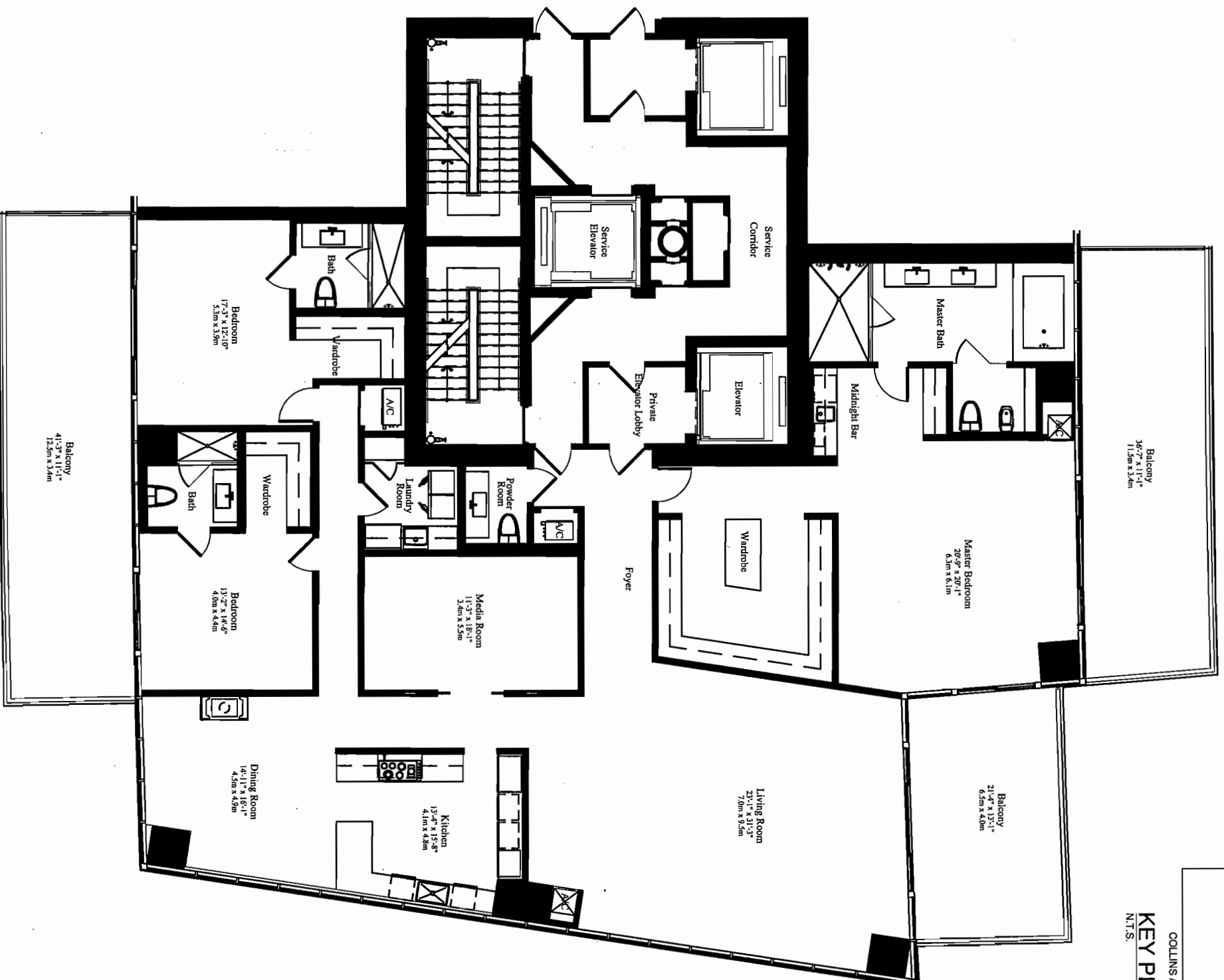


ST. REGIS Hotels & Resorts

ATLANTIC OCEAN



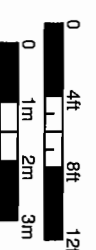
COLLINS AVENUE
KEY PLAN
N.T.S.
NORTH



SOUTH TOWER UNIT 'A'

3 BEDROOMS, MEDIA ROOM AND 3 1/2 BATHS

A/C	3,884 SQ FT	360.8 M ²
BALCONY	1,132 SQ FT	105.2 M ²
TOTAL	5,016 SQ FT	466.0 M²



The Sieger Suarez Architectural Partnership

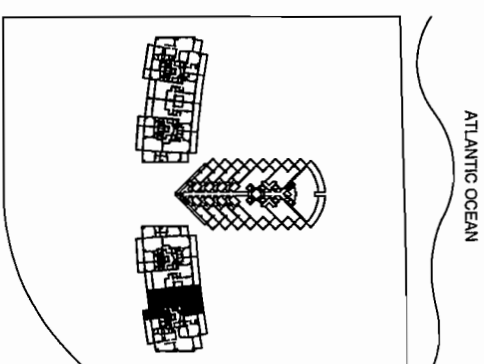
3995 Southeast 70th Street, South Miami, Florida, 33143 305/274-3702
 Office: 305/712-8888
 Fax: 305/274-3702

Stated dimensions are measured to the exterior boundaries of the exterior demising walls between units, and the outer boundary of interior demising walls adjacent to common elements, and in fact vary from the dimensions that would be determined by using the description and definition of the "Unit" set forth in the Declaration, (which generally only includes the interior airspace between the perimeter walls and excludes interior structural components). All dimensions are approximate, and all floor plans and development plans are subject to change.

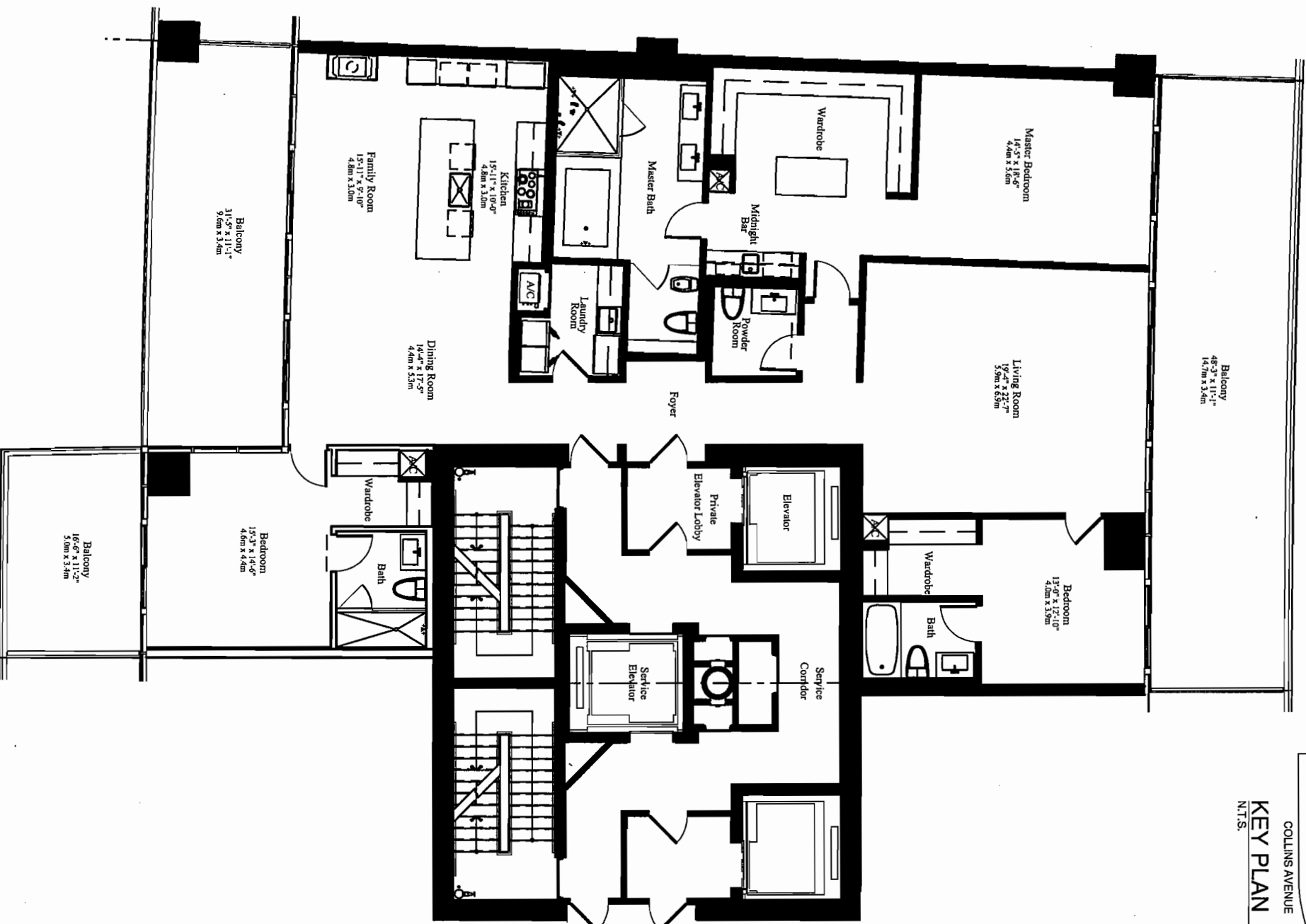


ST. REGIS

Hotels & Resorts

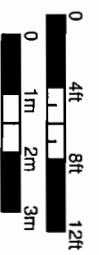


COLLINS AVENUE
KEY PLAN
 N.T.S.



SOUTH TOWER (Levels 04-11) UNIT 'B' MOD 3 BEDROOMS AND 3 1/2 BATHS

A/C	3,070 SQ FT	285.2 M ²
BALCONY	1,071 SQ FT	99.5 M ²
TOTAL	4,141 SQ FT	384.7 M²



The Sieger Suarez Architectural Partnership

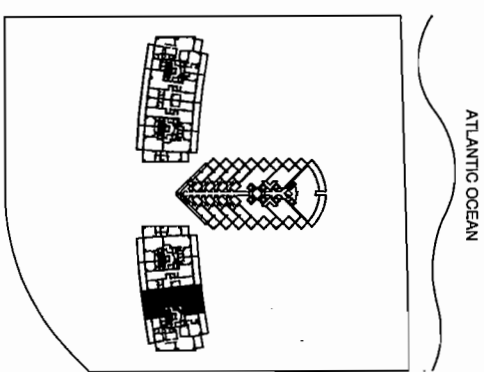
5996 Southview 7th Street, South Beach, Florida, 33141, 305/274-2702
 Carlos A. Sieger, AIA
 Cesar J. Suarez, AIA

Stated dimensions are measured to the exterior boundaries of the exterior demarcating walls between units, and the outer boundary of interior demarcating walls adjacent to common elements, and in fact vary from the dimensions that would be determined by using the description and definition of the "Unit" set forth in the Declaration (which generally only includes the interior demarcating walls and exclude interior structural components). All dimensions are approximate, and all floor plans and development plans are subject to change.



ST. REGIS

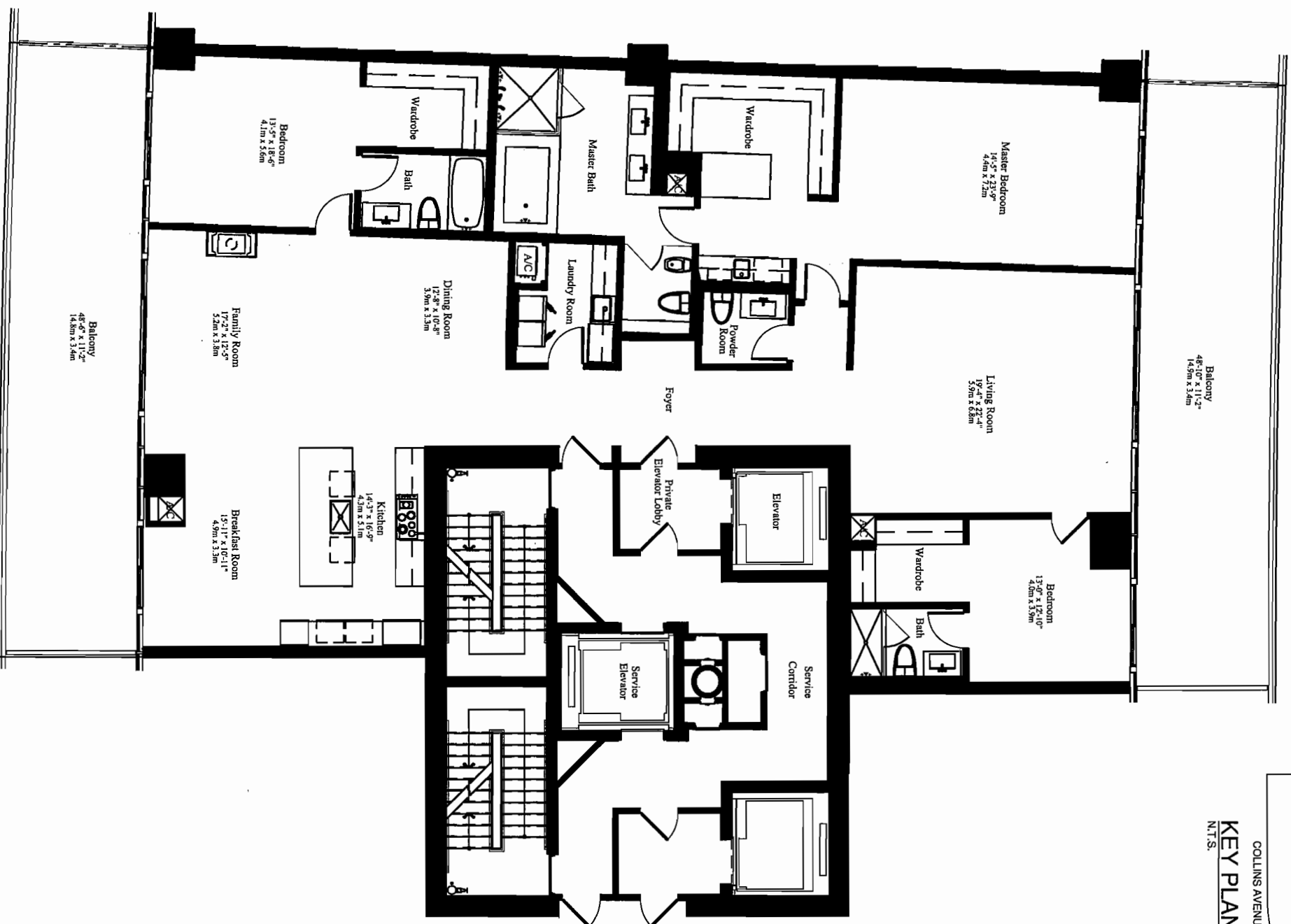
Hotels & Resorts



ATLANTIC OCEAN

COLLINS AVENUE
N.T.S.

KEY PLAN
NORTH

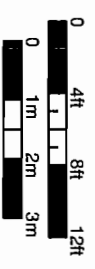


SOUTH TOWER (Levels 12-26)

UNIT 'B'

3 BEDROOMS AND 3 1/2 BATHS

A/C	3,459 SQ FT	321.4 M ²
BALCONY	1,071 SQ FT	99.5 M ²
TOTAL	4,530 SQ FT	420.9 M²



The Sieger Suarez Architectural Partnership

599 Southwest 7th Street, South Miami, Florida, 33144, 305/274-2702

Carlos E. Sieger, AIA

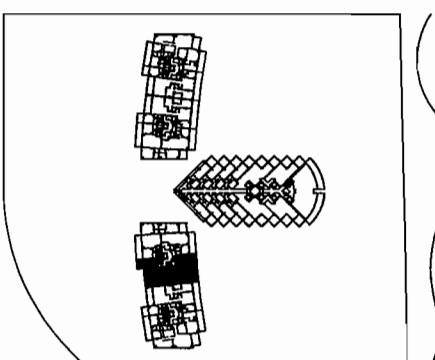
Diego J. Suarez, AIA

Stated dimensions are measured to the exterior boundaries of the exterior walls between units, and the outer boundary of interior demilining walls adjacent to common elements, and in fact vary from the dimensions that would be determined by using the description and definition of the "Unit" set forth in the Declaration (which generally only includes the interior demilining walls and excludes interior structural components). All dimensions are approximate, and all floor plans and development plans are subject to change.



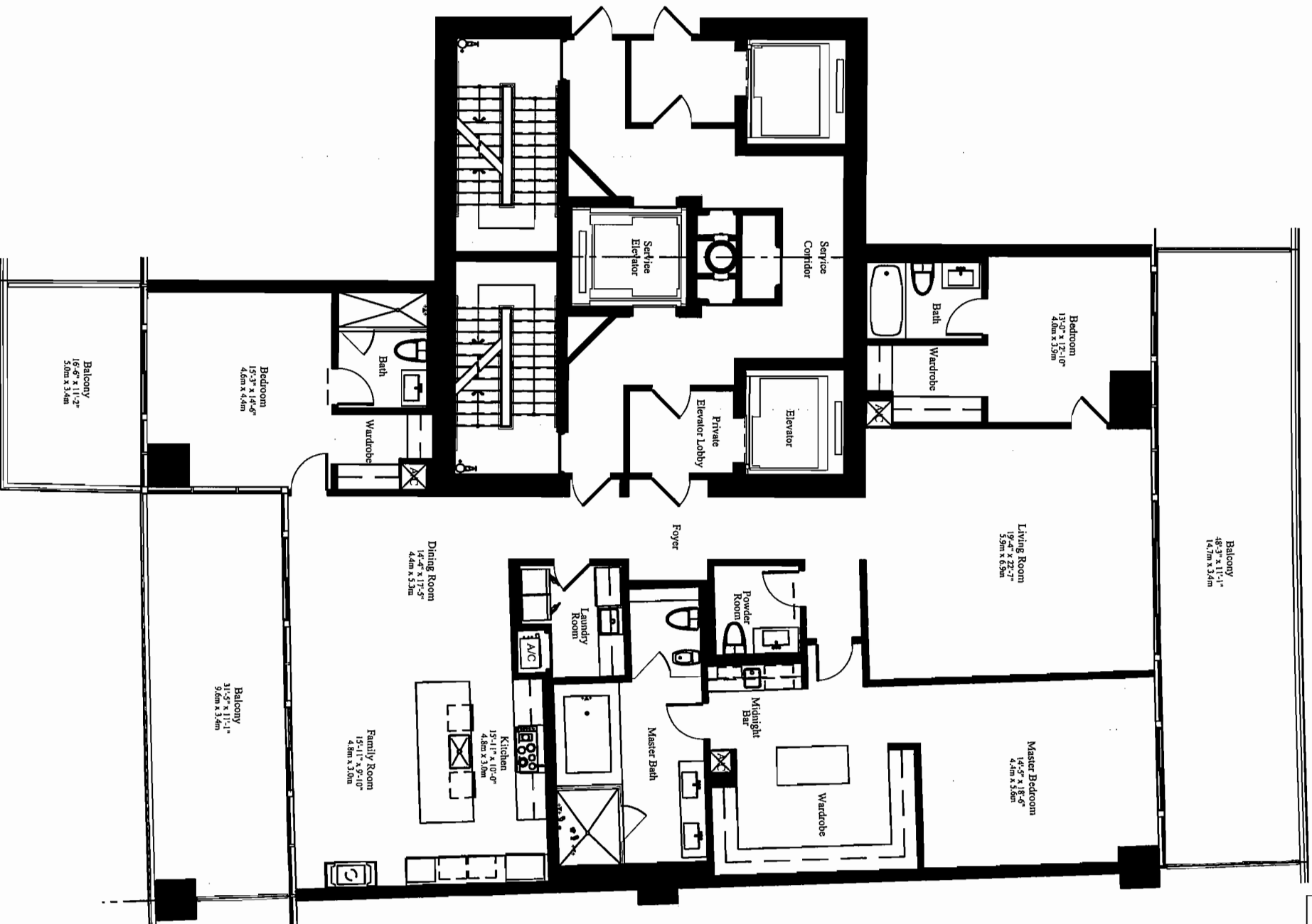
ST. REGIS

Hotels & Resorts



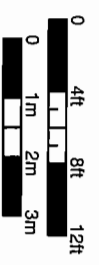
COLLINS AVENUE
KEY PLAN
 N.T.S. NORTH

ATLANTIC OCEAN



SOUTH TOWER (Levels 04-11) UNIT 'C' MOD 3 BEDROOMS AND 3 1/2 BATHS

A/C	3,070 SQ FT	285.2 M ²
BALCONY	1,071 SQ FT	99.5 M ²
TOTAL	4,141 SQ FT	384.7 M²



The Sieger Suarez Architectural Partnership

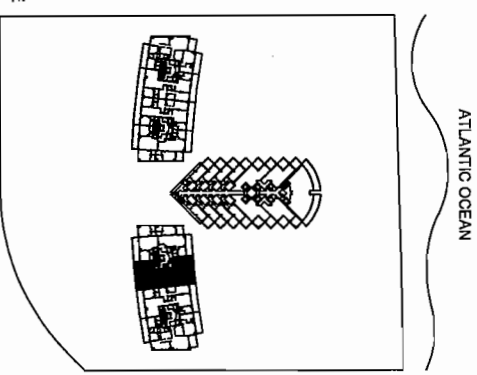
509 Southeast 7th Street, South Miami, Florida 33133 305/274-2702
 Suite 1000, Miami, FL 33133
 www.sieger-suarez.com

Stated dimensions are measured to the exterior boundaries of the exterior walls, the centerline of interior demising walls between units, and the outer boundary of interior demising walls adjacent to common elements, and in fact vary from the dimensions that would be determined by using the description and definition of the "Unit" set forth in the Declaration (which generally only includes the interior airspace between the perimeter walls and excludes interior structural components). All dimensions are approximate, and all floor plans and development plans are subject to change.

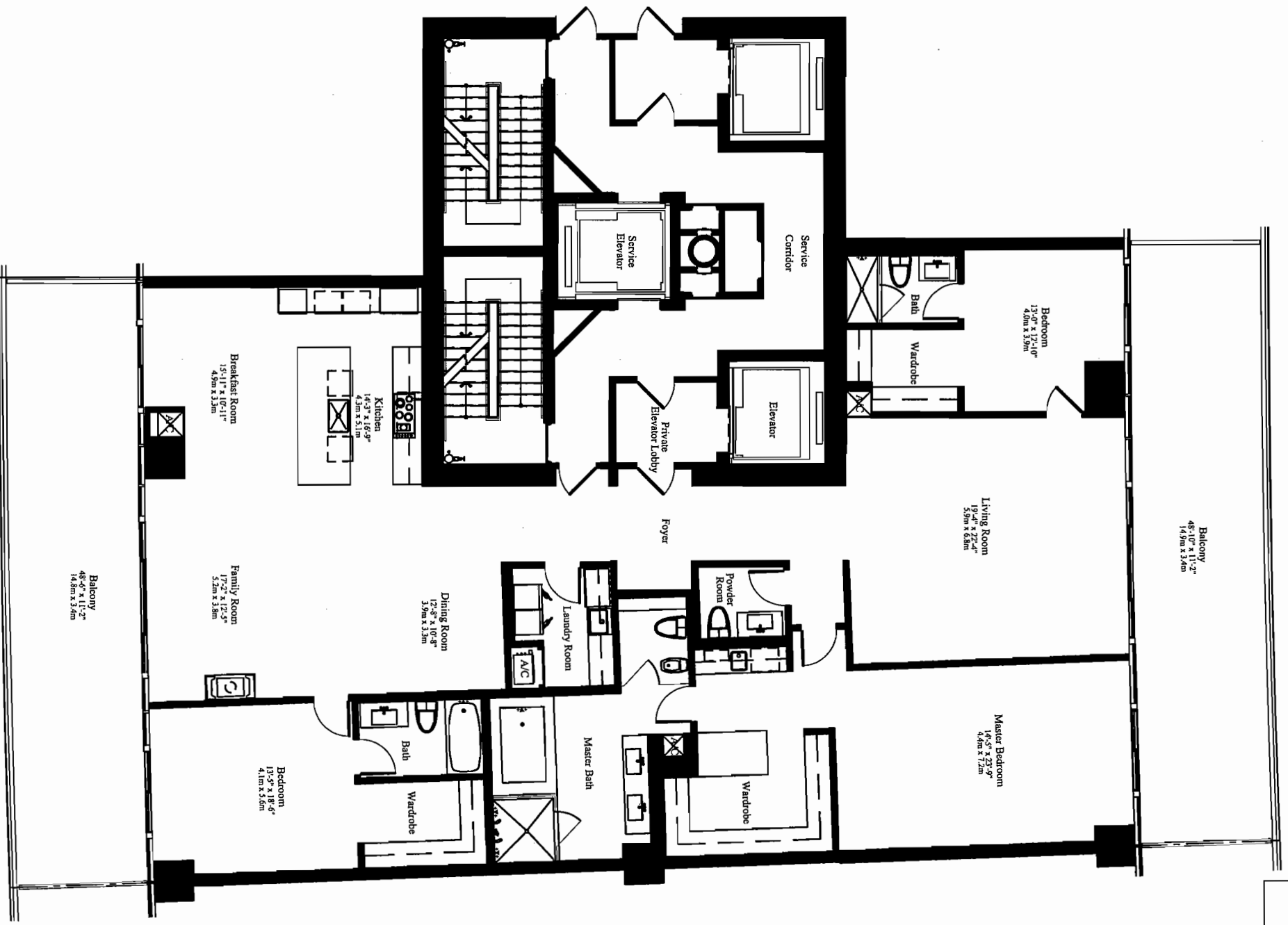


ST. REGIS

Hotels & Resorts



COLLINS AVENUE
KEY PLAN
 N.T.S.
 NORTH

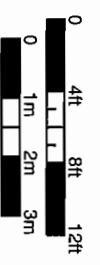


SOUTH TOWER (Levels 12-26)

UNIT 'C'

3 BEDROOMS AND 3 1/2 BATHS

A/C	3,459 SQ FT	321.4 M ²
BALCONY	1,071 SQ FT	99.5 M ²
TOTAL	4,530 SQ FT	420.9 M²



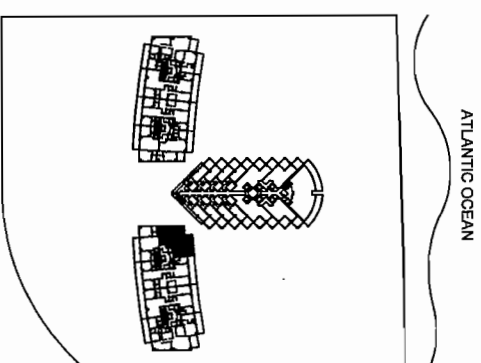
The Sieger Suarez Architectural Partnership

5898 Southview 70th Street, South Miami, Florida, 33156, 305/274-2702
 Office: 305/274-2702
 Fax: 305/274-2702

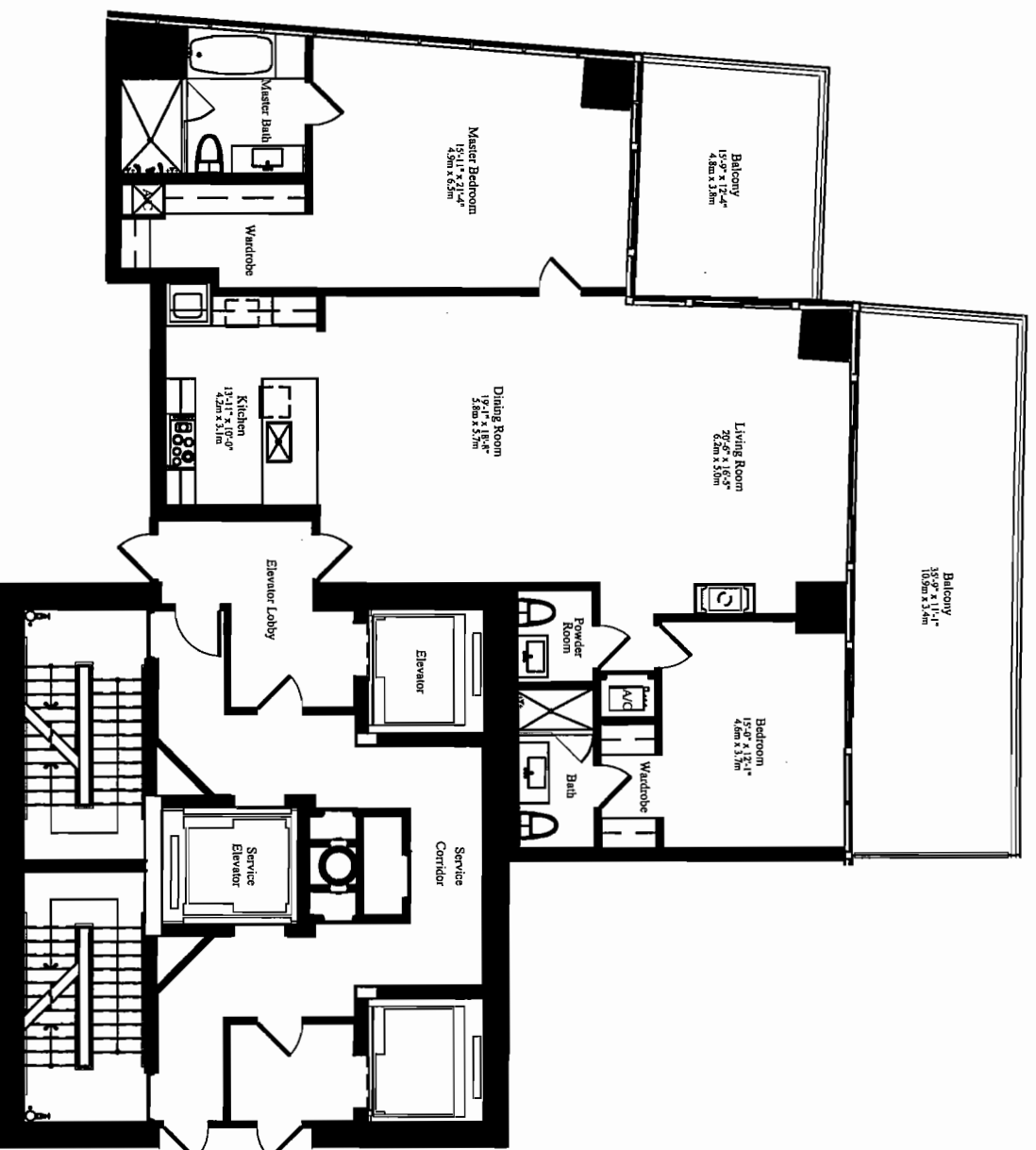
Stated dimensions are measured to the exterior boundaries of the exterior walls, the centerline of interior demising walls between units, and the outer boundary of interior demising walls adjacent to common elements, and in fact vary from the dimensions that would be determined by using the description and definition of the "Unit" set forth in the Declaration (which generally only address the exterior boundaries of the unit). Measurements are taken to the interior structural components. All dimensions are approximate, and all floor plans and development plans are subject to change.



ST. REGIS
Hotels & Resorts

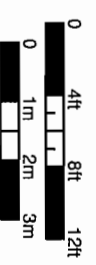


ATLANTIC OCEAN
COLLINS AVENUE
KEY PLAN
N.T.S. NORTH



SOUTH TOWER
UNIT 'D'
2 BEDROOMS AND 2 1/2 BATHS

A/C	1,911 SQ FT	177.5 M ²
BALCONY	594 SQ FT	55.2 M ²
TOTAL	2,505 SQ FT	232.7 M²



The Sieger Suarez Architectural Partnership

5998 Southview 706 Street, South Beach, Florida, 33143, 305/274-2702

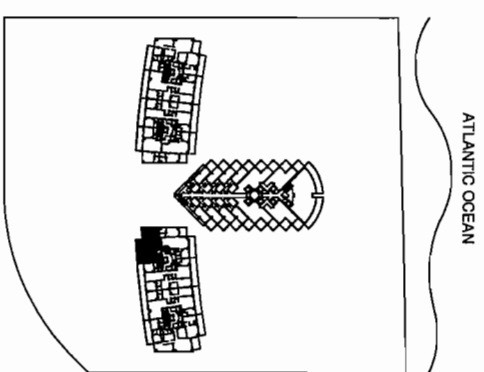
Circle 11, Page 124B

Page 1, Section 11A

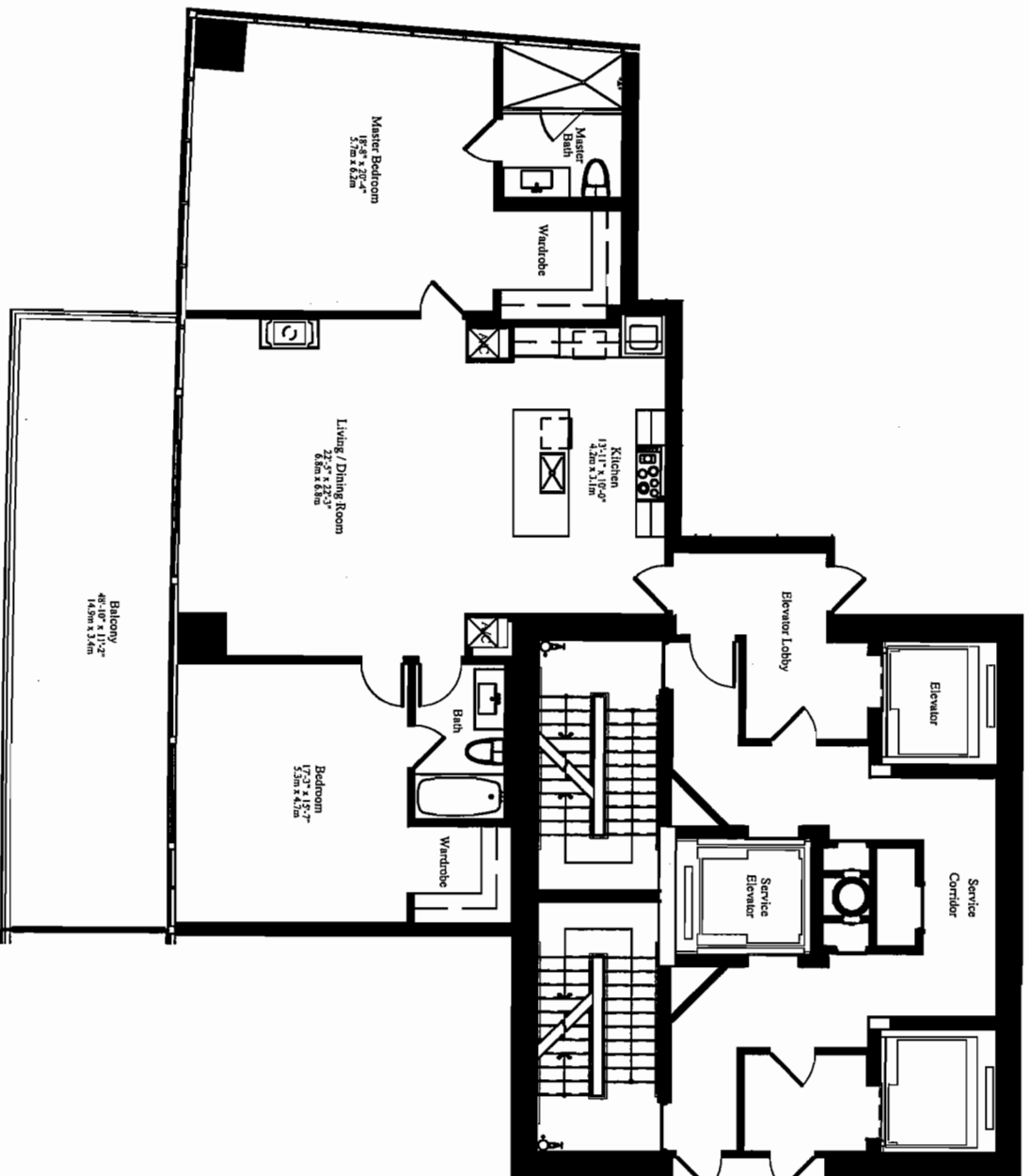
Stated dimensions are measured to the exterior boundaries of the exterior walls, the centerline of interior demising walls between units, and the outer boundary of interior demising walls adjacent to common elements, and in fact vary from the dimensions that would be determined by using the description and definition of the "Unit" set forth in the Declaration (which generally only includes the interior airspace between the perimeter walls and excludes interior structural components). All dimensions are approximate, and all floor plans and development plans are subject to change.



ST. REGIS
Hotels & Resorts

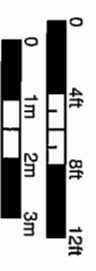


COLLINS AVENUE
KEY PLAN
N.T.S. NORTH



SOUTH TOWER
UNIT 'E'
2 BEDROOMS AND 2 BATHS

A/C	1,777 SQ FT	165.1 M ²
BALCONY	455 SQ FT	42.3 M ²
TOTAL	2,232 SQ FT	207.4 M²



The Sieger Suarez Architectural Partnership

5900 Southwestern 70th Street, South Miami, Florida, 33143, 305/274-2702
Circle 11, **Architects**, LLC

Stated dimensions are measured to the exterior wall, the centerline of interior demarcating walls between units, and the outer boundary of interior demarcating walls adjacent to common elements, and in fact vary from the dimensions that would be determined by using the description and definition of the "Unit" set forth in the Declaration (which generally only includes the interior airspace between the perimeter walls and excludes interior structural components). All dimensions are approximate, and all floor plans and development plans are subject to change.

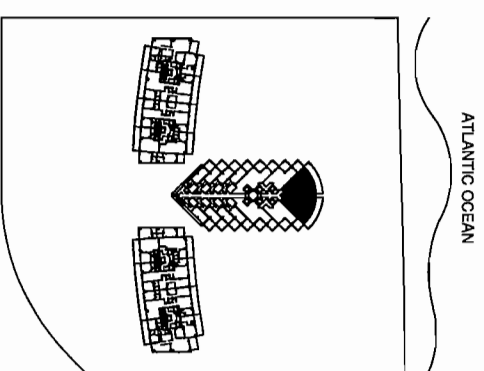
HOTEL

TOWER

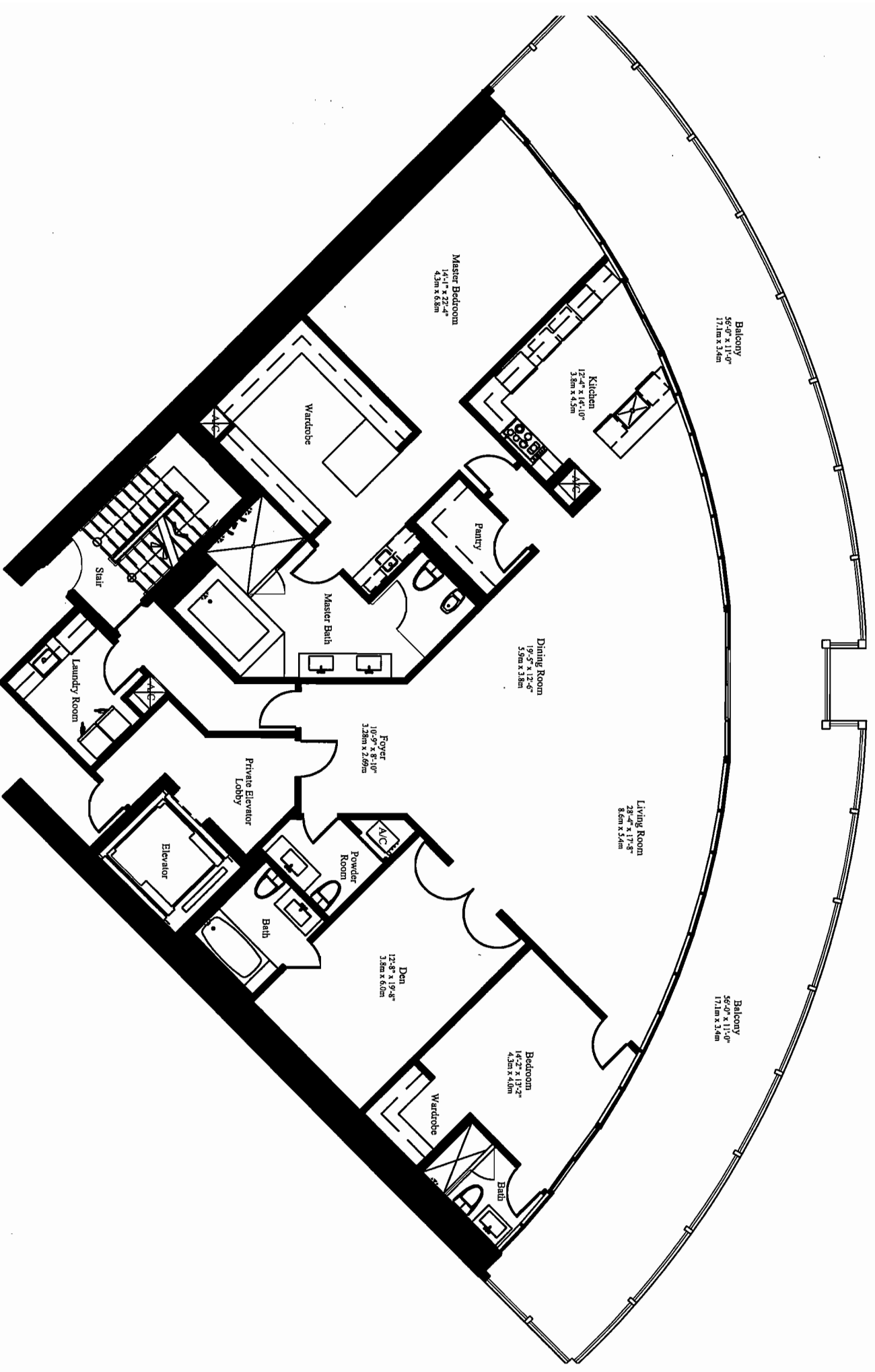
RESIDENCES.



ST. REGIS
Hotels & Resorts

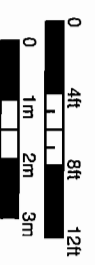


COLLINS AVENUE
KEY PLAN
N.T.S.



HOTEL TOWER
UNIT 'A'
2 BEDROOMS, DEN AND 3 & 1/2 BATHS

A/C	3,281 SQ FT	304.8 M ²
BALCONY	1,283 SQ FT	119.2 M ²
TOTAL	4,564 SQ FT	424.0 M²



The Sieger Suarez Architectural Partnership

5996 Southwest 70th Street, South Miami, Florida, 33143, 305/274-2702.

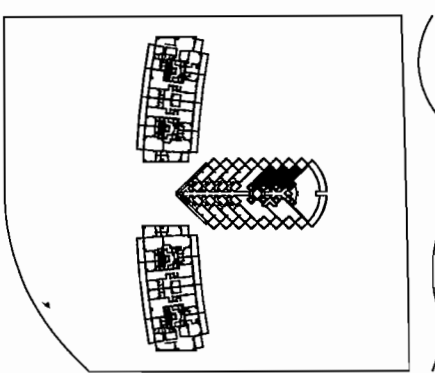
October 14, 2009, FALL
DE J. 457102

John J. Suarez, AIA
DE J. 481703

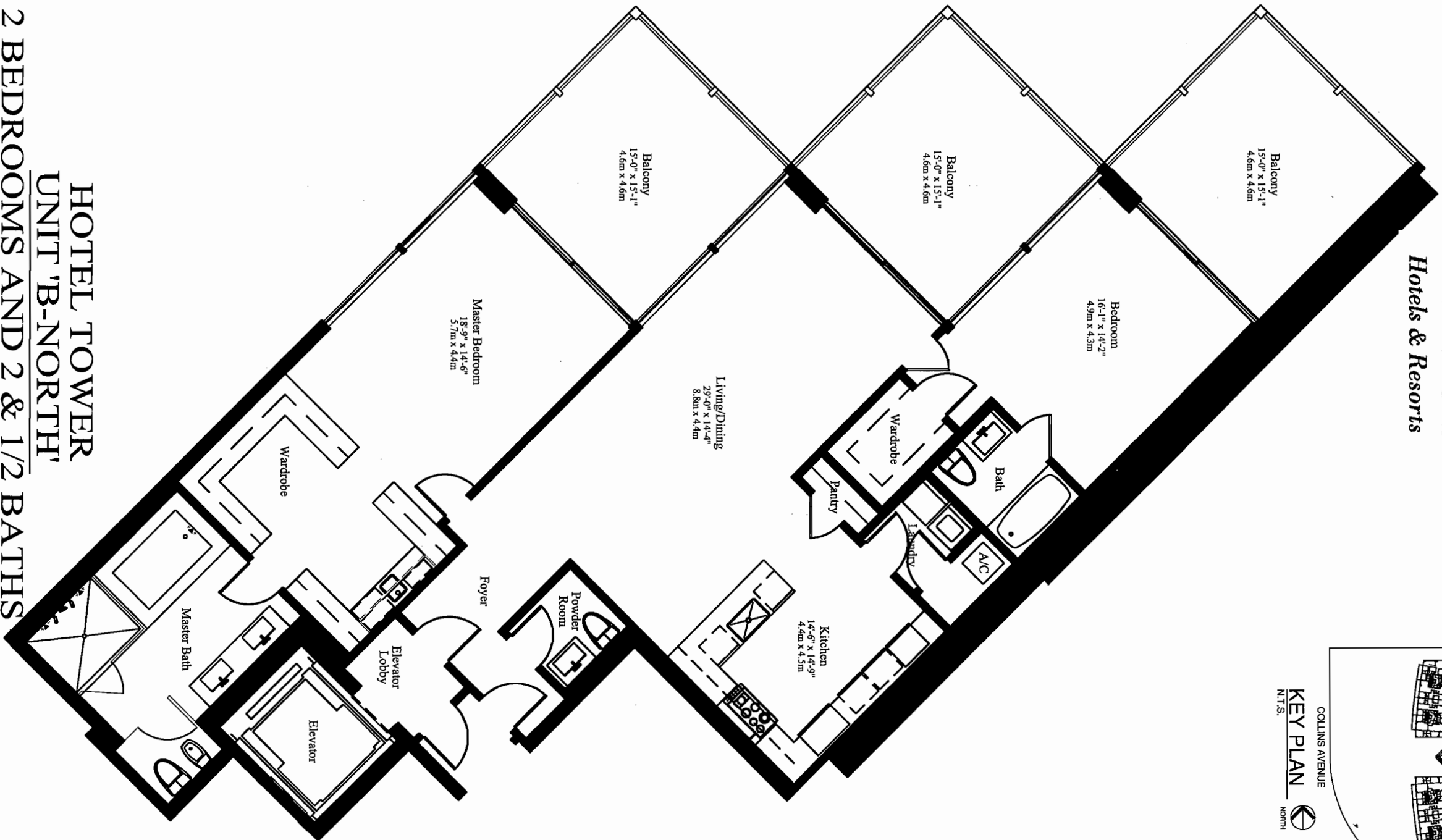
Stated dimensions are measured to the exterior boundaries of the exterior walls, the centerline of interior demising walls between units, and the outer boundary of interior demising walls adjacent to common elements, and in fact vary from the dimensions that would be determined by using the description and definition of the "Unit" set forth in the Declaration (which generally only includes the interior airspace between the perimeter walls and excludes interior structural components). All dimensions are approximate, and all floor plans and development plans are subject to change.



ST. REGIS
Hotels & Resorts

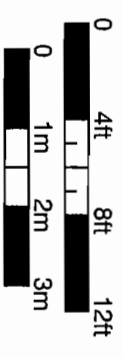


COLLINS AVENUE
KEY PLAN
N.T.S. NORTH



A/C	2,128 SQ FT	197.7 M ²
BALCONY	683 SQ FT	63.5 M ²
TOTAL	2,811 SQ FT	261.2 M²

HOTEL TOWER
UNIT 'B-NORTH'
2 BEDROOMS AND 2 & 1/2 BATHS



The Sieger Suarez Architectural Partnership

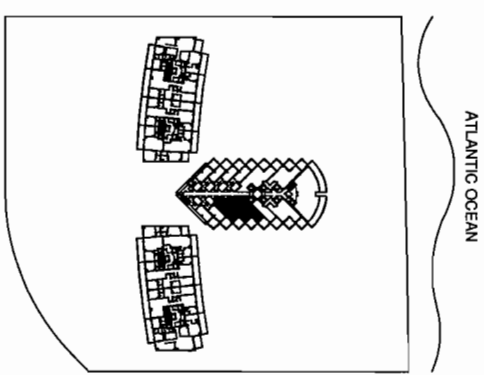
5985 Sandwood 70th Street, South Miami, Florida, 33143, 305/274-2702.
Office: 1927 222nd Ave. #27, Miami, FL 33133

Standard dimensions are measured to the exterior boundaries of the exterior walls, the centerline of interior dividing walls between units, and the outer boundary of interior dividing walls adjacent to common elements, and in feet vary from the dimensions that would be obtained by using the description of definition of the "14th" set forth in the Declaration (which generally only includes the interior finishes between the perimeter walls and excludes interior structural components). All dimensions are approximate, and all floor plans and development plans are subject to change.



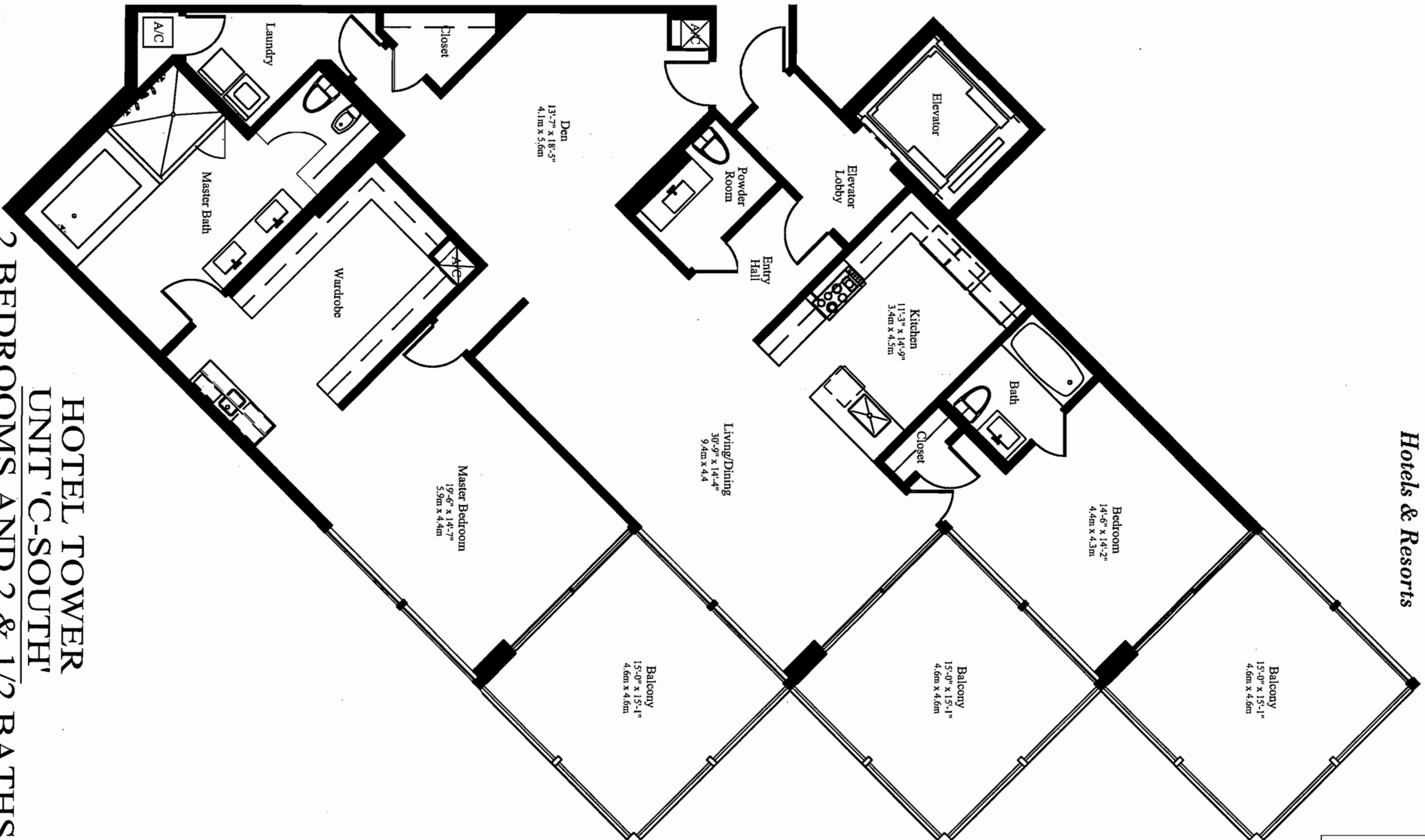
ST. REGIS

Hotels & Resorts



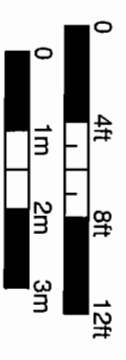
COLLINS AVENUE
KEY PLAN
 N.T.S.

ATLANTIC OCEAN



HOTEL TOWER UNIT 'C-SOUTH' 2 BEDROOMS AND 2 & 1/2 BATHS

A/C	2,413 SQ FT	224.2 M ²
BALCONY	683 SQ FT	63.5 M ²
TOTAL	3,096 SQ FT	287.7 M²



The Sieger Suarez Architectural Partnership

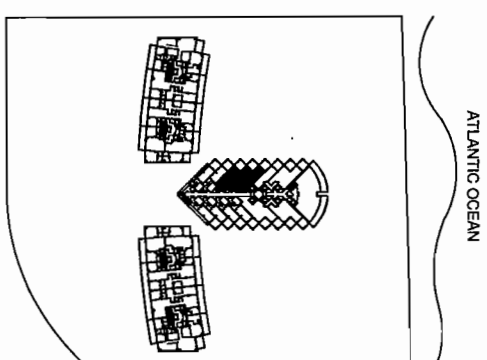
5996 Southwest 70th Street, South Miami, Florida, 33143, 305/274-2702.
 Charles W. Sieger, F.A.I.A.
 Dec 9, 2012

Tom J. Suarez, AIA
 Dec 9, 2012

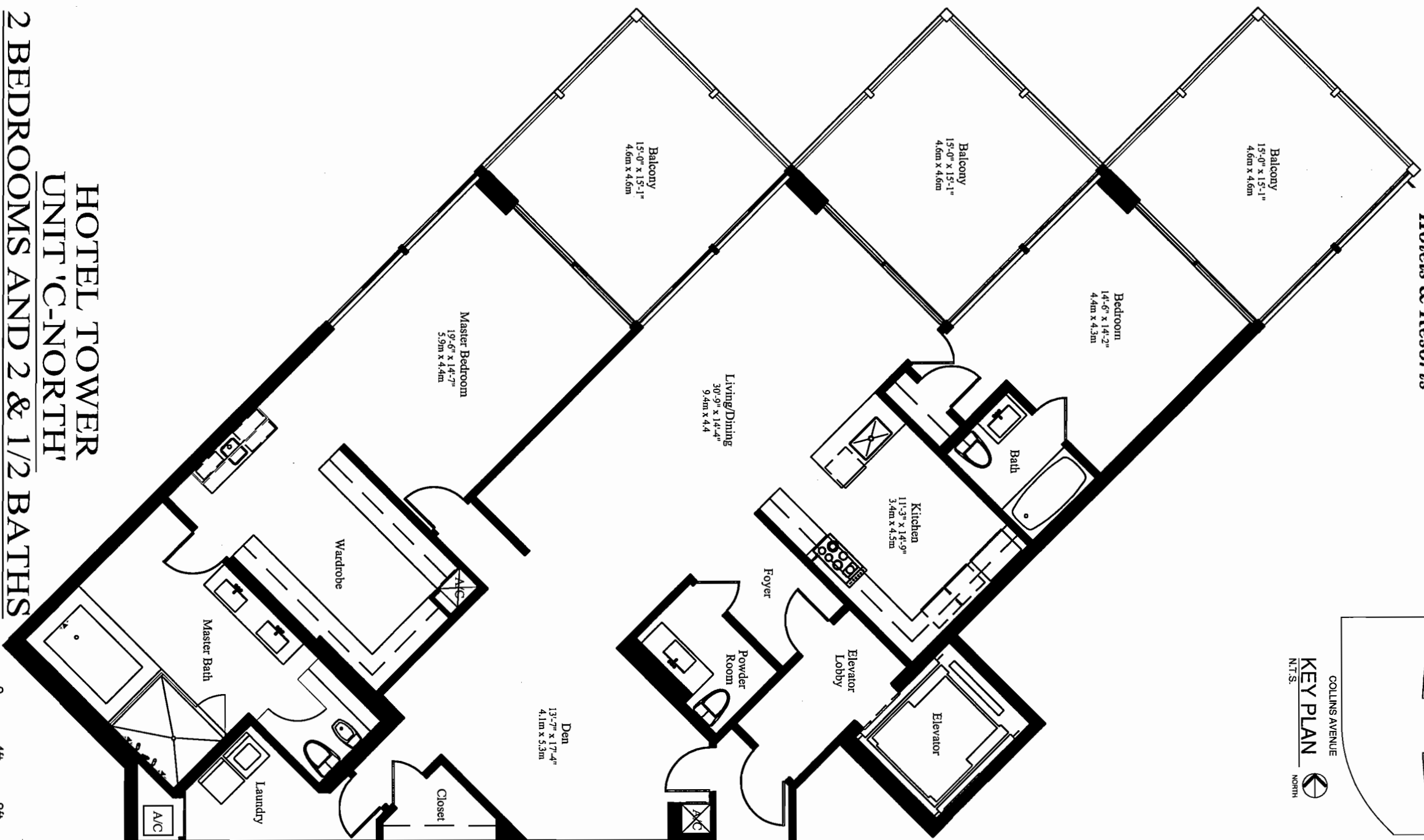
Stated dimensions are measured to the exterior boundaries of the exterior walls, the centerline of interior demising walls between units, and the outer boundary of interior demising walls adjacent to common elements, and in fact vary from the dimensions that would be determined by using the description and definition of the "Unit" set forth in the Declaration (which generally only includes the interior airspace between the perimeter walls and excludes interior structural components). All dimensions are approximate, and all floor plans and development plans are subject to change.



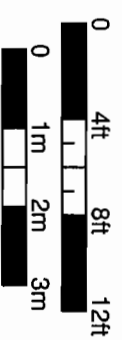
ST. REGIS Hotels & Resorts



COLLINS AVENUE
KEY PLAN
N.T.S. NORTH



A/C	2,413 SQ FT	224.2 M ²
BALCONY	683 SQ FT	63.5 M ²
TOTAL	3,096 SQ FT	287.7 M²



HOTEL TOWER UNIT 'C-NORTH' 2 BEDROOMS AND 2 & 1/2 BATHS

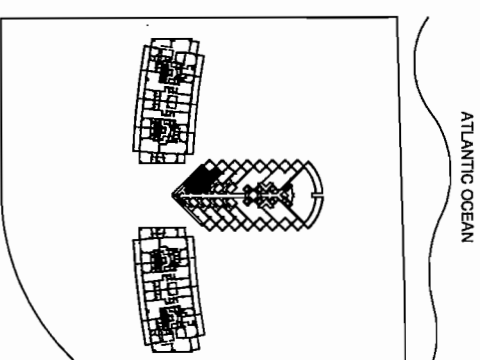
The Sieger Suarez Architectural Partnership

5996 Southwest 70th Street, South Miami, Florida, 33143, 305/274-2702.
Charles M. Sieger, F.A.I.A.
Dec. 7, 2012

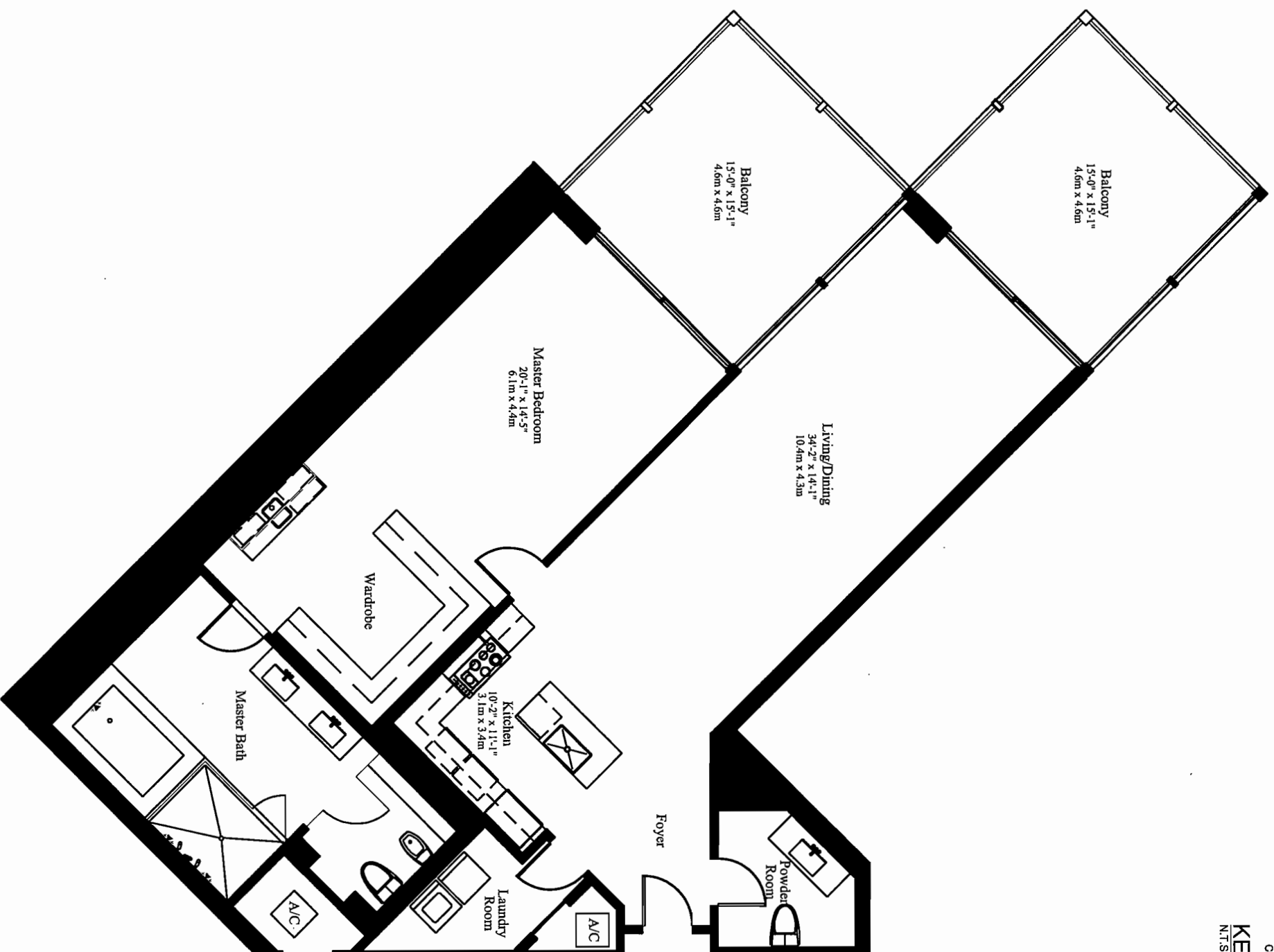
Stated dimensions are measured to the exterior boundaries of the exterior walls, the centerline of interior demising walls between units, and the outer boundary of interior demising walls adjacent to common elements, and in fact vary from the dimensions that would be determined by using the description and definition of the "Unit" set forth in the Declaration (which generally only includes the interior airspace between the perimeter walls and excludes interior structural components). All dimensions are approximate, and all floor plans and development plans are subject to change.



ST. REGIS
Hotels & Resorts

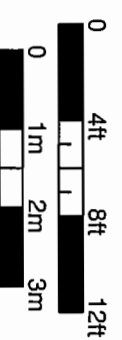


COLLINS AVENUE
KEY PLAN
N.T.S. NORTH



HOTEL TOWER
UNIT 'D-NORTH'
1 BEDROOM AND 2 & 1/2 BATHS

A/C	1,817 SQ FT	168.8 M ²
BALCONY	455 SQ FT	42.3 M ²
TOTAL	2,272 SQ FT	211.1 M²



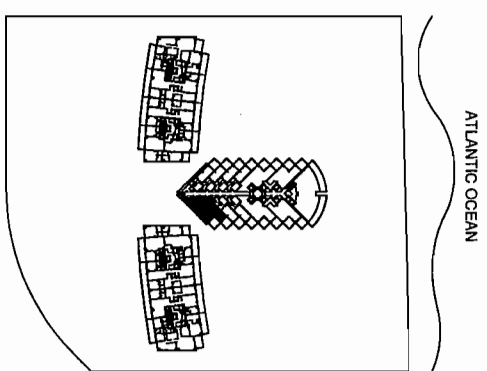
The Sieger Suarez Architectural Partnership

5796 Southeast 7th Street, South Miami, Florida, 33156, 305/274-2702
© 2014 Sieger Suarez, LLC

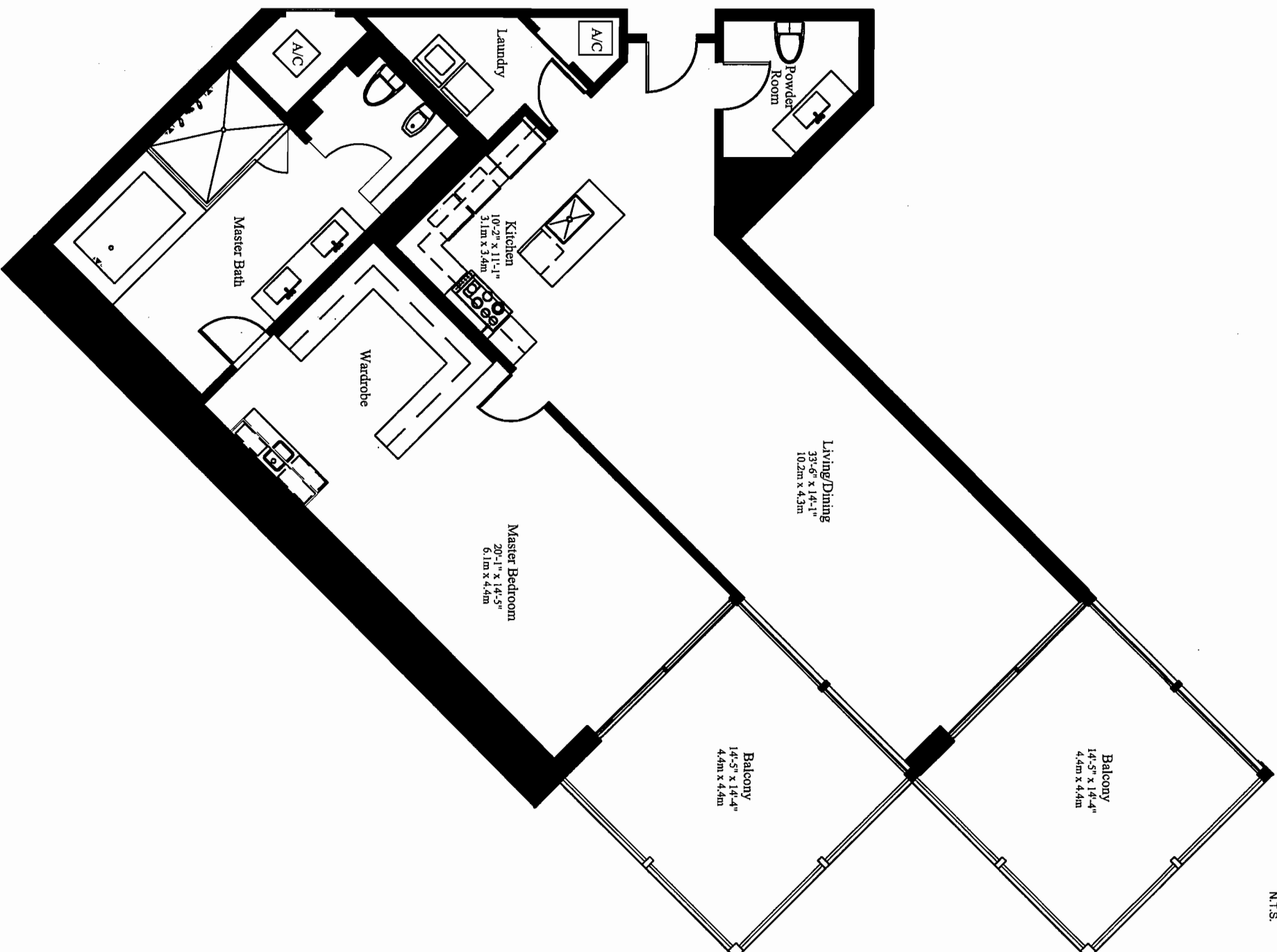
Standard dimensions are measured to the exterior boundaries of the exterior walls, the centerline of interior demising walls between units, and the outer boundary of interior demising walls adjacent to common elements, and in fact vary from the dimensions that would be determined by using the description and definition of the "Unit" set forth in the Declaration (which generally only includes the interior finish walls and excludes interior structural components). All dimensions are approximate, and all floor plans and development plans are subject to change.



ST. REGIS
Hotels & Resorts

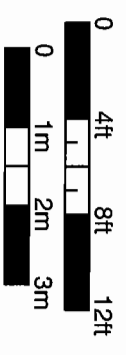


COLLINS AVENUE
KEY PLAN
N.T.S. NORTH



HOTEL TOWER
UNIT 'D-SOUTH'
1 BEDROOMS AND 2 & 1/2 BATHS

A/C	1,817 SQ FT	168.8 M ²
BALCONY	455 SQ FT	42.3 M ²
TOTAL	2,272 SQ FT	211.1 M²



The Sieger Suarez Architectural Partnership

5906 Southview 7th Street, South Miami, Florida 33156 305/274-2702
Cesar E. Sieger, AIA
Cesar J. Suarez, AIA

Standard dimensions are measured to the exterior boundaries of the exterior walls, the combination of interior demarcating walls between units, and the outer boundary of interior demarcating walls adjacent to common elements, and in fact vary from the dimensions that would be determined by using the description and definition of the "Unit" set forth in the Declaration (which generally only includes the interior distances between the perimeter walls and excludes interior structural components). All dimensions are approximate, and all floor plans and development plans are subject to change.

NORTH

TOWER

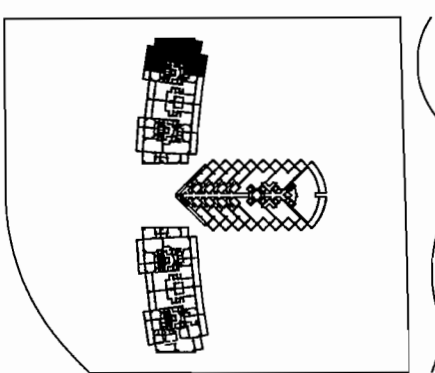
RESIDENCES



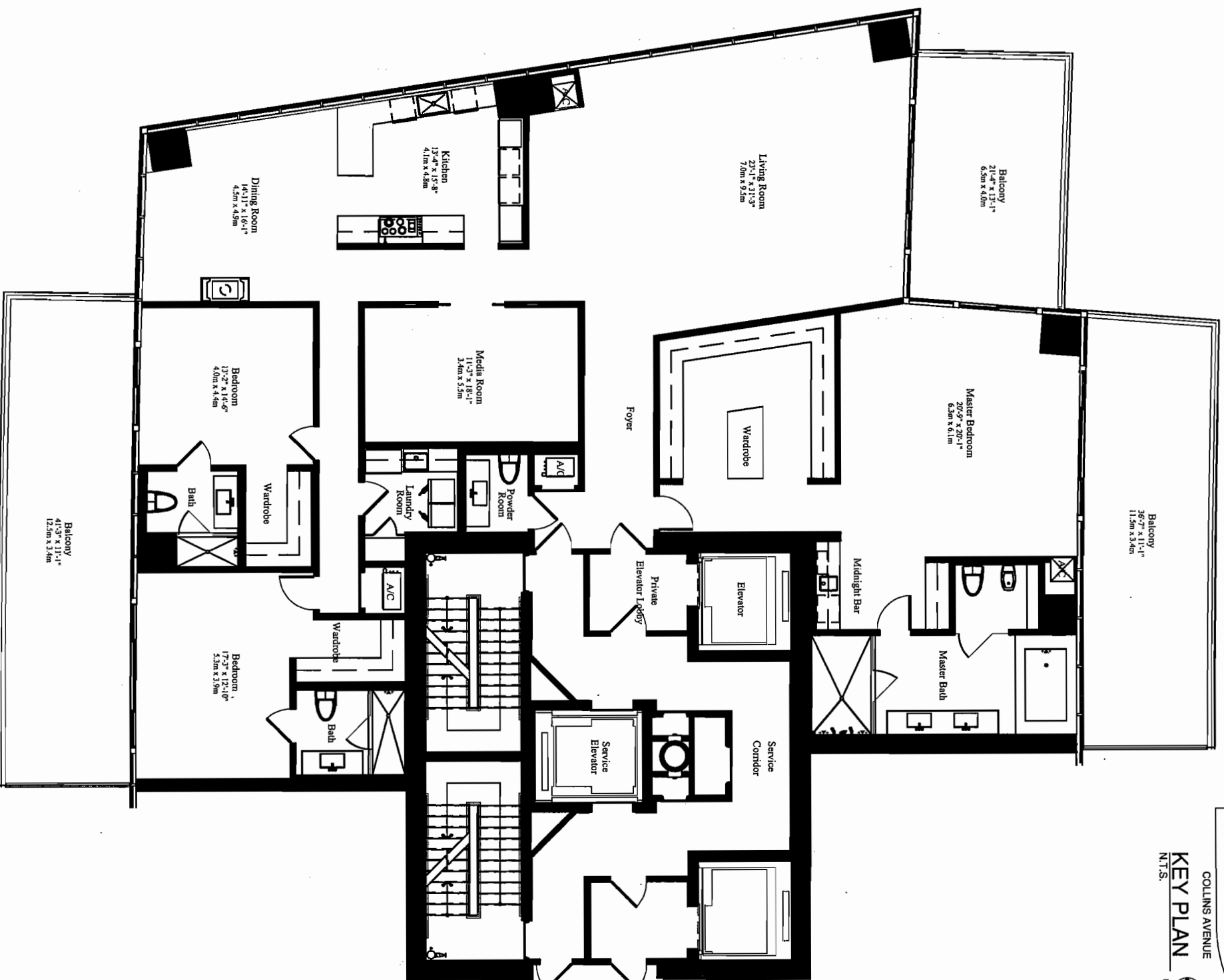
ST. REGIS

Hotels & Resorts

ATLANTIC OCEAN



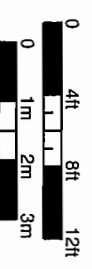
COLLINS AVENUE
KEY PLAN
 N.T.S. NORTH



NORTH TOWER UNIT 'A'

3 BEDROOMS, MEDIA ROOM AND 3 1/2 BATHS

A/C	3,884 SQ FT	360.8 M ²
BALCONY	1,132 SQ FT	105.2 M ²
TOTAL	5,016 SQ FT	466.0 M²



The Sieger Suarez Architectural Partnership

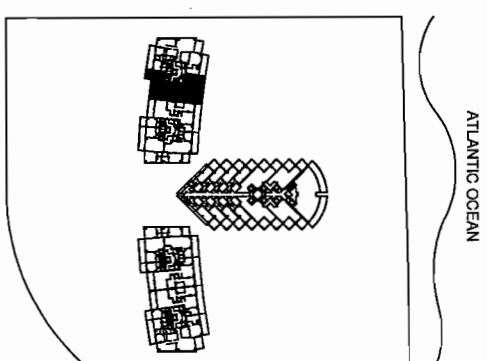
5995 Southwind 70th Street, South Beach, Florida, 33141, 305/214-2702
 Carlos R. Sieger, FAIA
 Jeff A. Suarez, AIA

Standard dimensions are measured to the exterior boundaries of the exterior walls, the centerline of interior demarcating walls between units, and the outer boundary of interior demarcating walls adjacent to common elements, and in fact vary from the dimensions that would be determined by using the description and delineation of the "Unit" set forth in the Declaration (which generally only includes the interior airspace between the perimeter walls and excludes interior structural components). All dimensions are approximate, and all floor plans and development plans are subject to change.



ST. REGIS

Hotels & Resorts



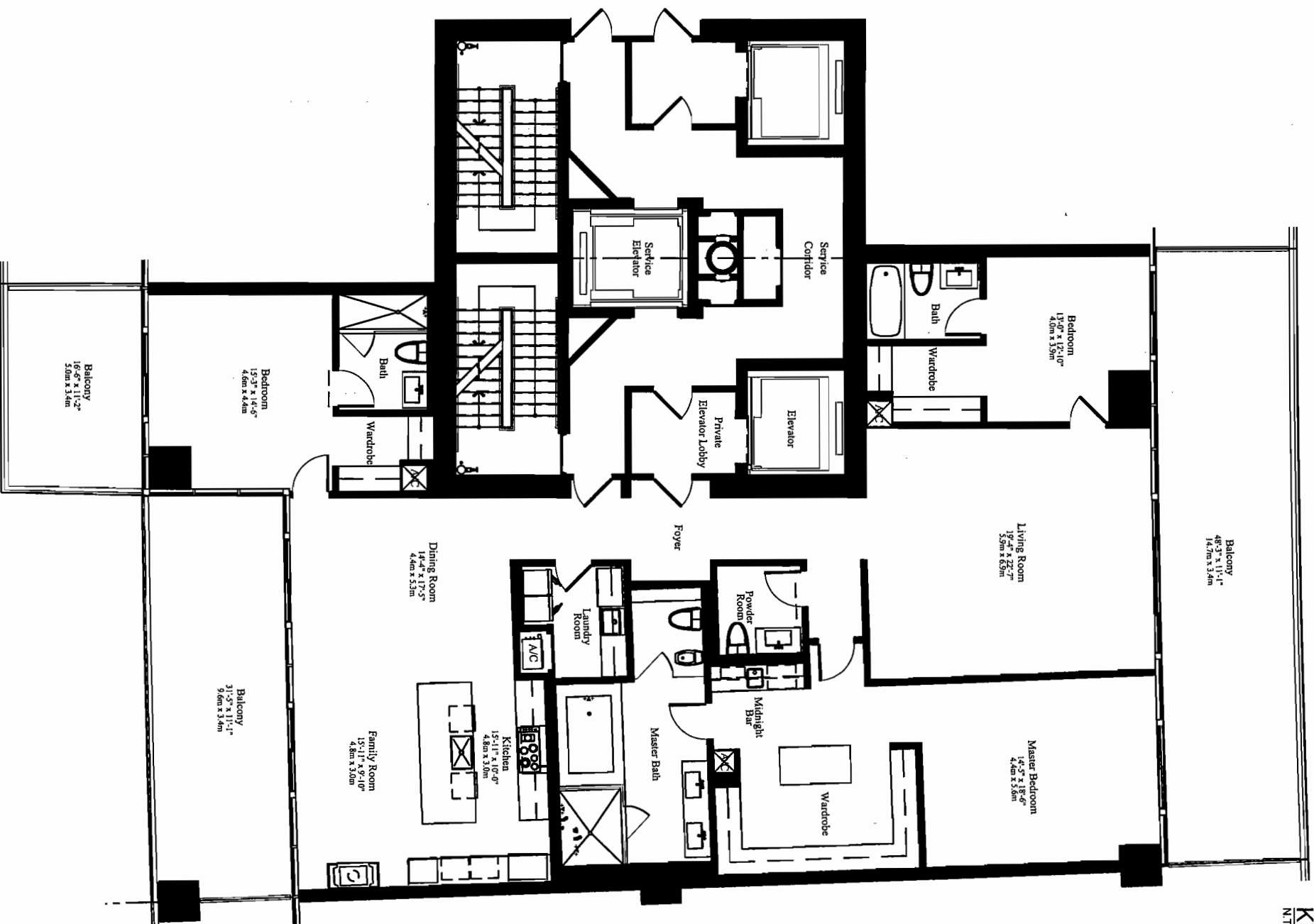
ATLANTIC OCEAN

COLLINS AVENUE

KEY PLAN

N.T.S.

NORTH

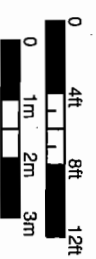


NORTH TOWER (Levels 04-11)

UNIT 'B' MOD

3 BEDROOMS AND 3 1/2 BATHS

A/C	3,070 SQ FT	285.2 M ²
BALCONY	1,071 SQ FT	99.5 M ²
TOTAL	4,141 SQ FT	384.7 M ²



The Sieger Suarez Architectural Partnership

598 Southern 7th Street, South Miami, Florida, 33131, 305/724-2702

Owner: St. Regis Hotels & Resorts

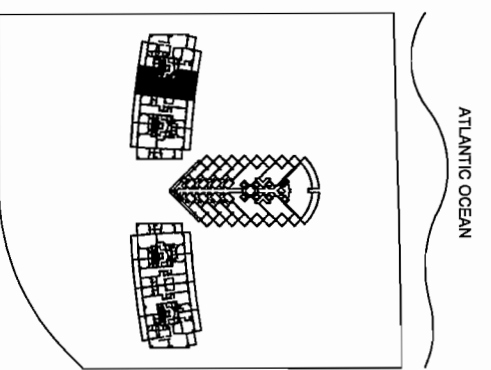
Architect: Sieger Suarez

Stated dimensions are measured to the exterior boundaries of the exterior walls, the centerline of interior demising walls between units, and the outer boundary of masonry demising walls adjacent to common elements, and in fact vary from the dimensions that would be determined by using the description and definition of the "Unit" set forth in the Declaration (which generally only encompasses, and all floor plans and development plans are subject to change).

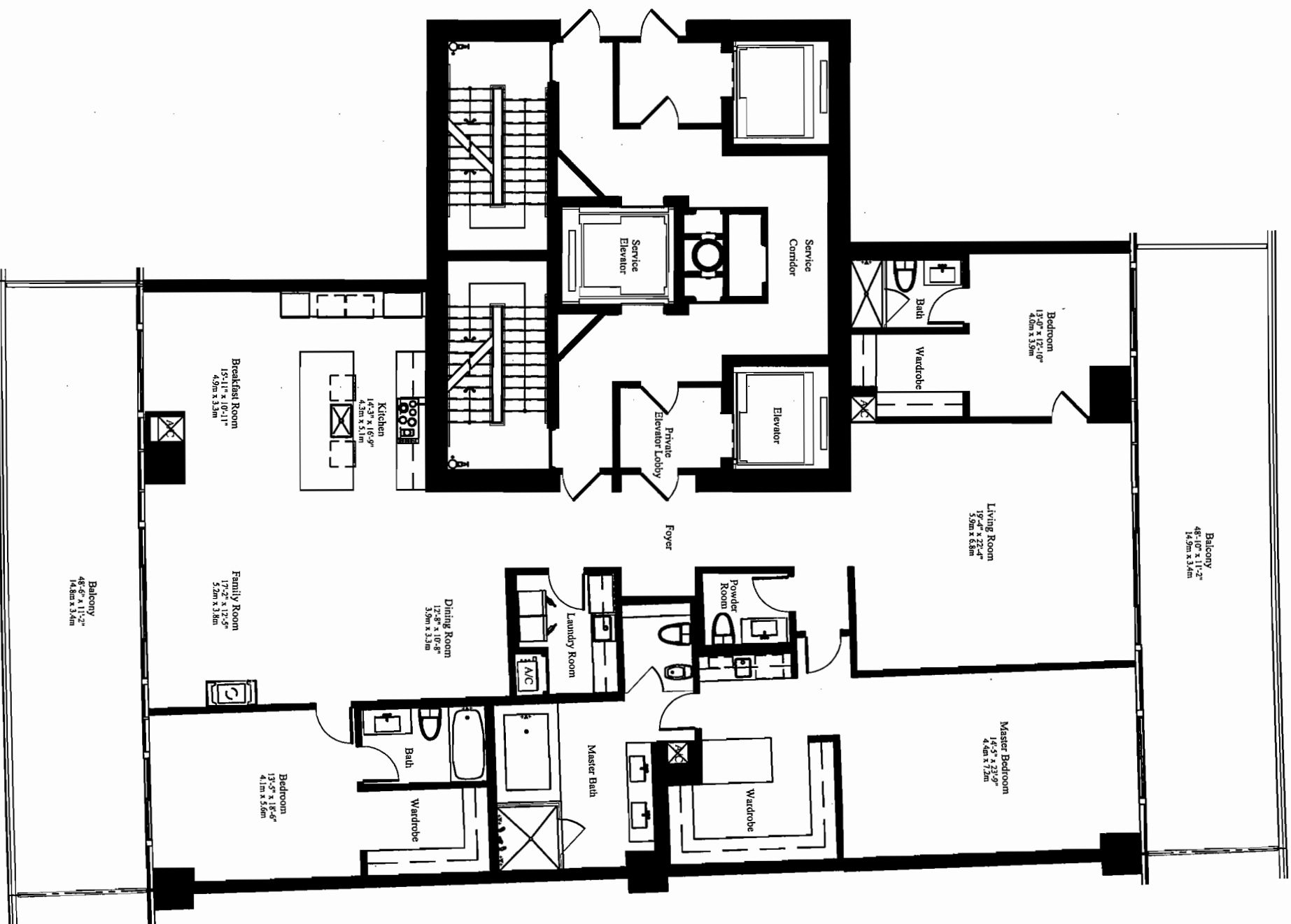


ST. REGIS

Hotels & Resorts



COLLINS AVENUE
KEY PLAN
 N.T.S. NORTH



NORTH TOWER (Levels 12-26) UNIT 'B' 3 BEDROOMS AND 3 1/2 BATHS

A/C	3,459 SQ FT	321.4 M ²
BALCONY	1,071 SQ FT	99.5 M ²
TOTAL	4,530 SQ FT	420.9 M²



The Sieger Suarez Architectural Partnership

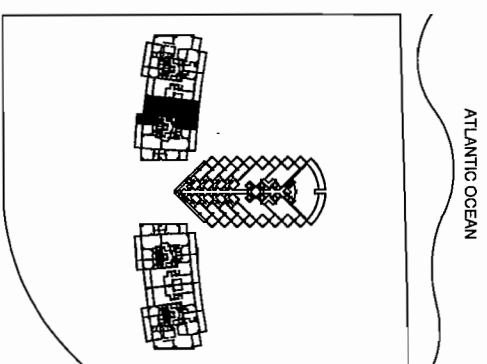
5984 Southside 7th St., Suite 300, Miami, Florida 33141 305/274-2702
 Office: 305/274-2702 Fax: 305/274-2702
 www.sieger-suarez.com

Stated dimensions are measured to the exterior boundaries of the exterior walls, the centerline of interior demarcating walls between units, and the outer boundary of interior demarcating walls adjacent to common elements, and in fact vary from the dimensions that would be determined by using the description and definition of the "Unit" set forth in the Declaration (which generally only includes the "net" interior dimensions between the exterior walls and the structural components). All dimensions are approximate, and all floor plans and development plans are subject to change.

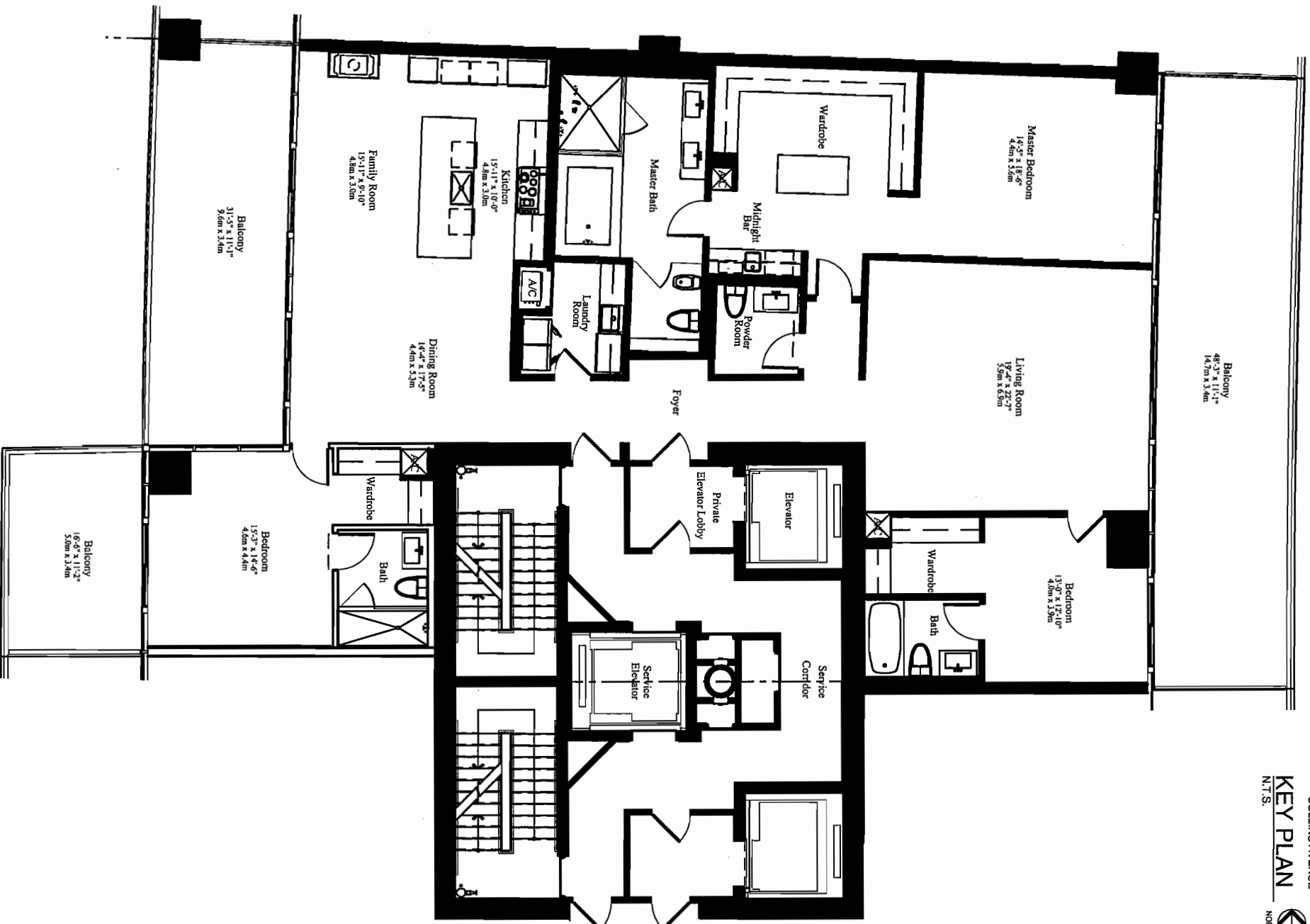


ST. REGIS

Hotels & Resorts

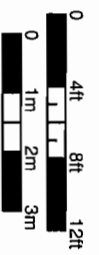


COLLINS AVENUE
KEY PLAN
 N.T.S.



NORTH TOWER (Levels 04-11) UNIT 'C' MOD 3 BEDROOMS AND 3 1/2 BATHS

A/C	3,070 SQ FT	285.2 M ²
BALCONY	1,071 SQ FT	99.5 M ²
TOTAL	4,141 SQ FT	384.7 M²



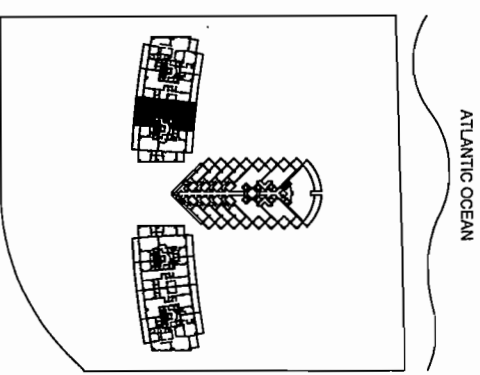
The Sieger Suarez Architectural Partnership

599 Southeast 70th Street, South Miami, Florida, 33143, 305/274-2702
 Carlos A. Sieger, LEED AP
 Cesar J. Suarez, LEED AP

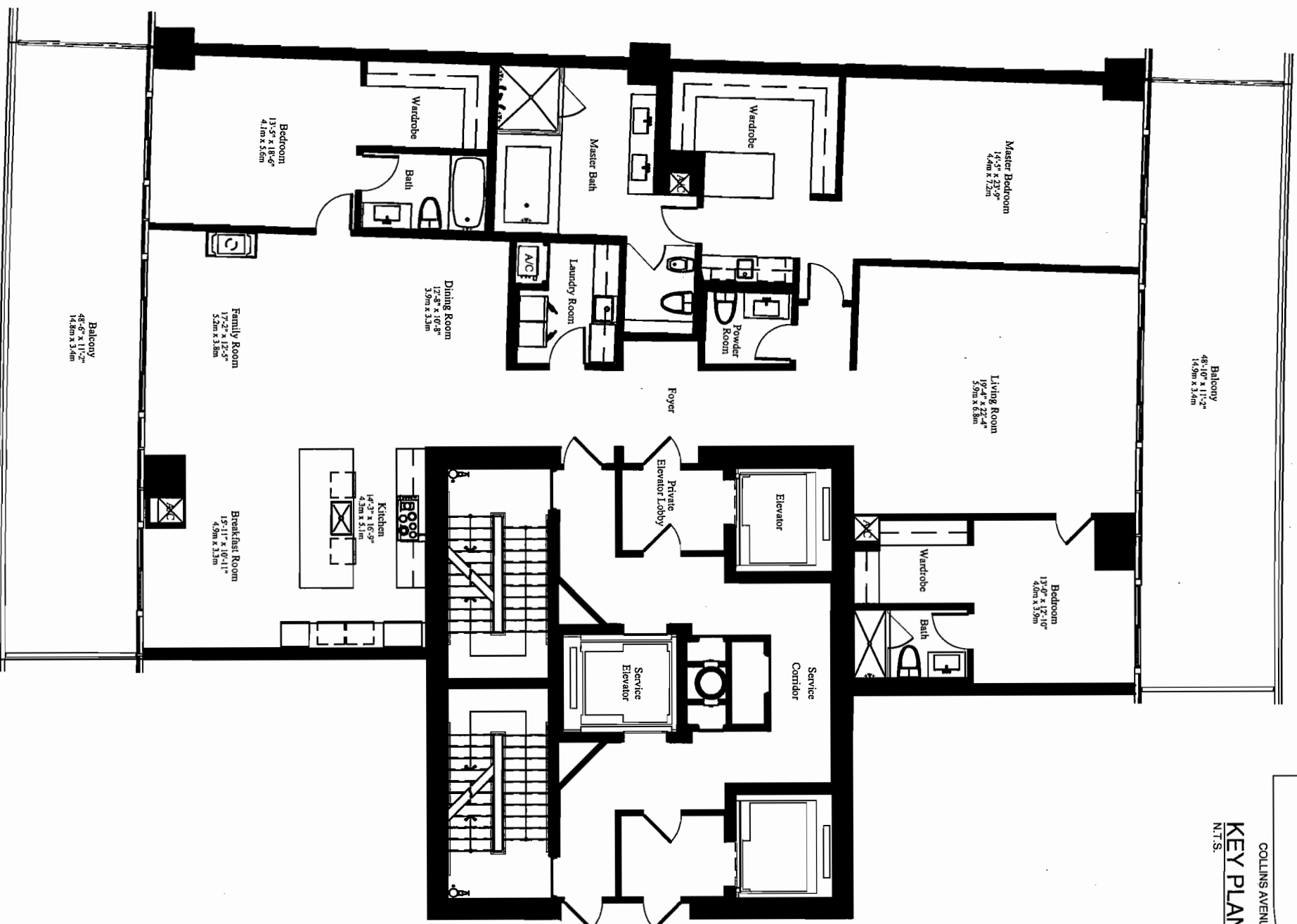
Stated dimensions are measured to the exterior boundaries of the exterior walls, the centerline of interior demarcating walls between units, and the outer boundary of interior demarcating walls adjacent to common elements, and in fact vary from the dimensions that would be determined by using the description and definition of the "Unit" set forth in the Declaration (which generally only includes the interior delineation between the perimeter walls and excludes interior structural components). All dimensions are approximate, and all floor plans and development plans are subject to change.



ST. REGIS Hotels & Resorts

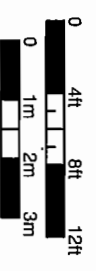


COLLINS AVENUE
KEY PLAN
N.T.S.
NORTH



NORTH TOWER (Levels 12-26) UNIT 'C' 3 BEDROOMS AND 3 1/2 BATHS

A/C	3,459 SQ FT	321.4 M ²
BALCONY	1,071 SQ FT	99.5 M ²
TOTAL	4,530 SQ FT	420.9 M²



The Sieger Suarez Architectural Partnership

598 Southern 7th Street, South Miami, Florida, 33131, 305/274-2702

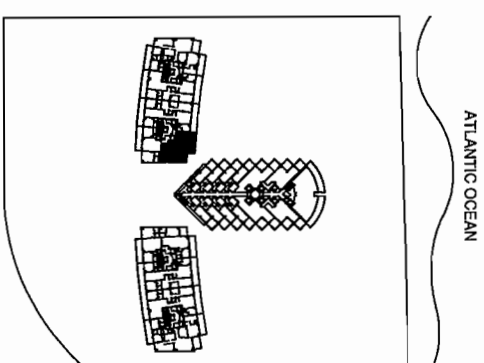
Circle 11 on Reader Service Card

Circle 7 on Reader Service Card

Stated dimensions are measured to the exterior boundaries of the exterior walls, the centerline of interior demising walls between units, and the outer boundary of interior demising walls adjacent to common elements, and in fact vary from the dimensions that would be determined by using the description and definition of the "Unit" set forth in the Declaration (which generally only includes finished interior surfaces between the perimeter walls and partitions) for structural components. All dimensions are approximate, and all floor plans and development plans are subject to change.



ST. REGIS
Hotels & Resorts



COLLINS AVENUE
KEY PLAN
N.T.S. NORTH



NORTH TOWER
UNIT 'D'

2 BEDROOMS AND 2 1/2 BATHS

A/C	1,911 SQ FT	177.5 M ²
BALCONY	594 SQ FT	55.2 M ²
TOTAL	2,505 SQ FT	232.7 M²



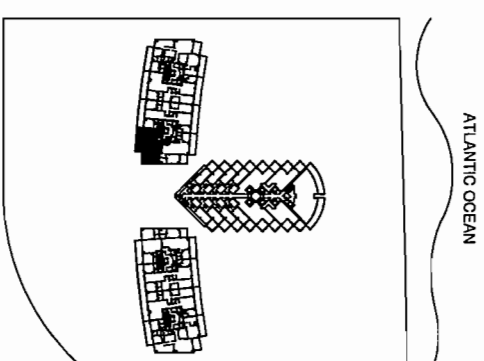
The Sieger Suarez Architectural Partnership

5994 Southview 7th Street, South Miami, Florida, 33143, 305/274-2702
Circle 6 on Reader Service Card

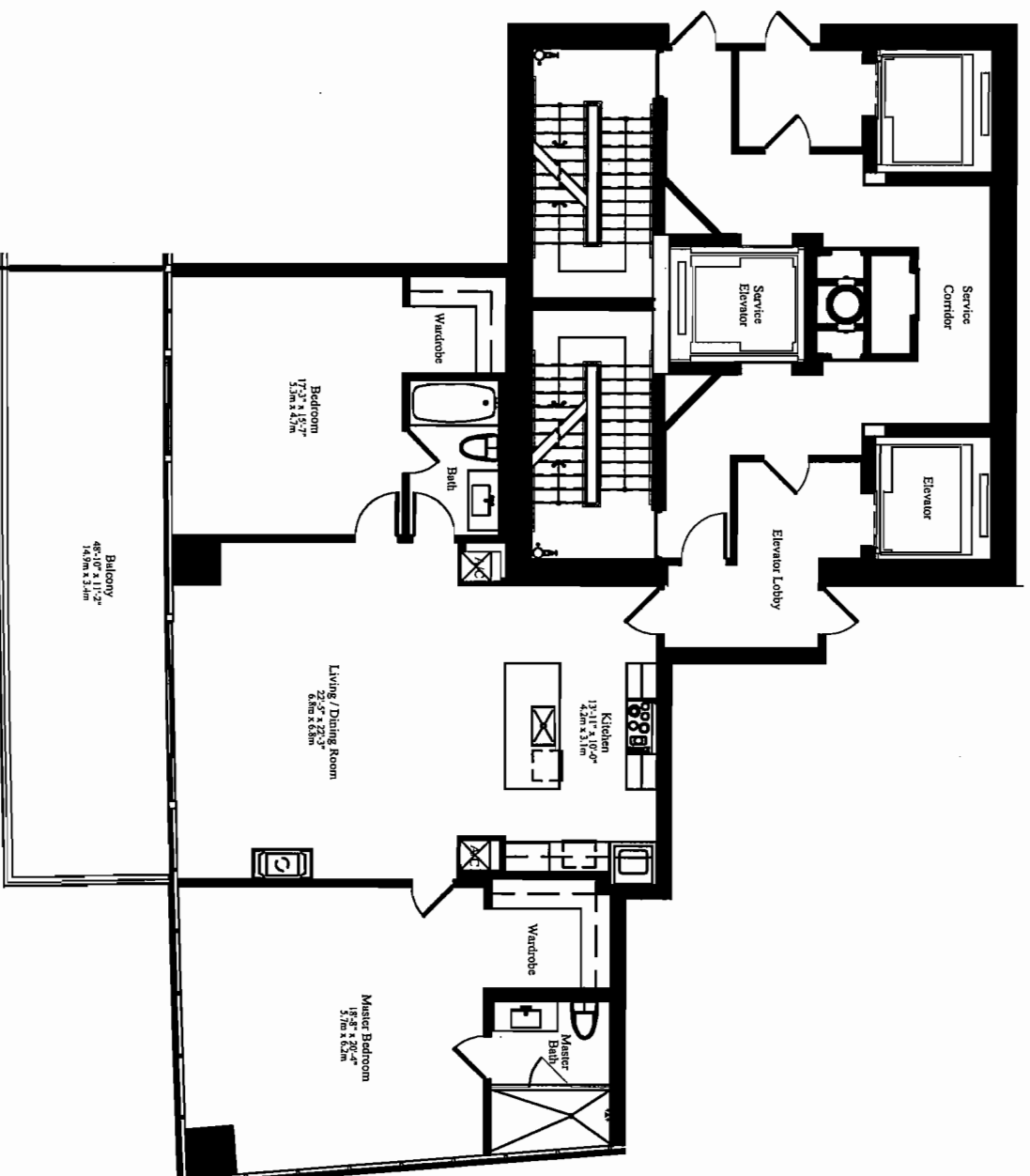
Stated dimensions are measured to the exterior boundaries of the exterior walls, the centerline of interior demising walls between units, and the outer boundary of interior demising walls adjacent to common elements, and in fact vary from the dimensions that would be determined by using the description and definition of the Unit set forth in the Declaration (which generally only approximate, and all floor plans and development plans are subject to change).



ST. REGIS
Hotels & Resorts

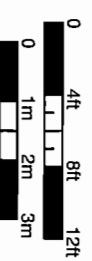


COLLINS AVENUE
KEY PLAN
N.T.S. 



NORTH TOWER
UNIT 'E'
2 BEDROOMS AND 2 BATHS

A/C	1,777 SQ FT	165.1 M ²
BALCONY	455 SQ FT	42.3 M ²
TOTAL	2,232 SQ FT	207.4 M²



The Sieger Suarez Architectural Partnership

5996 Southwood 7th Street, South Miami, Florida, 33143, 305/274-2702.
Circle 11, Tier 7, 2014

CS-1-10112014, LLC

Stated dimensions are measured to the exterior boundaries of the exterior demising walls between units, and the outer boundary of interior demising walls adjacent to common elements, and in fact vary from the dimensions that would be determined by using the description and definition of the "Unit" set forth in the Declaration (which generally only includes the interior spaces between the perimeter walls and excludes interior structural components). All dimensions are approximate, and all floor plans and development plans are subject to change.